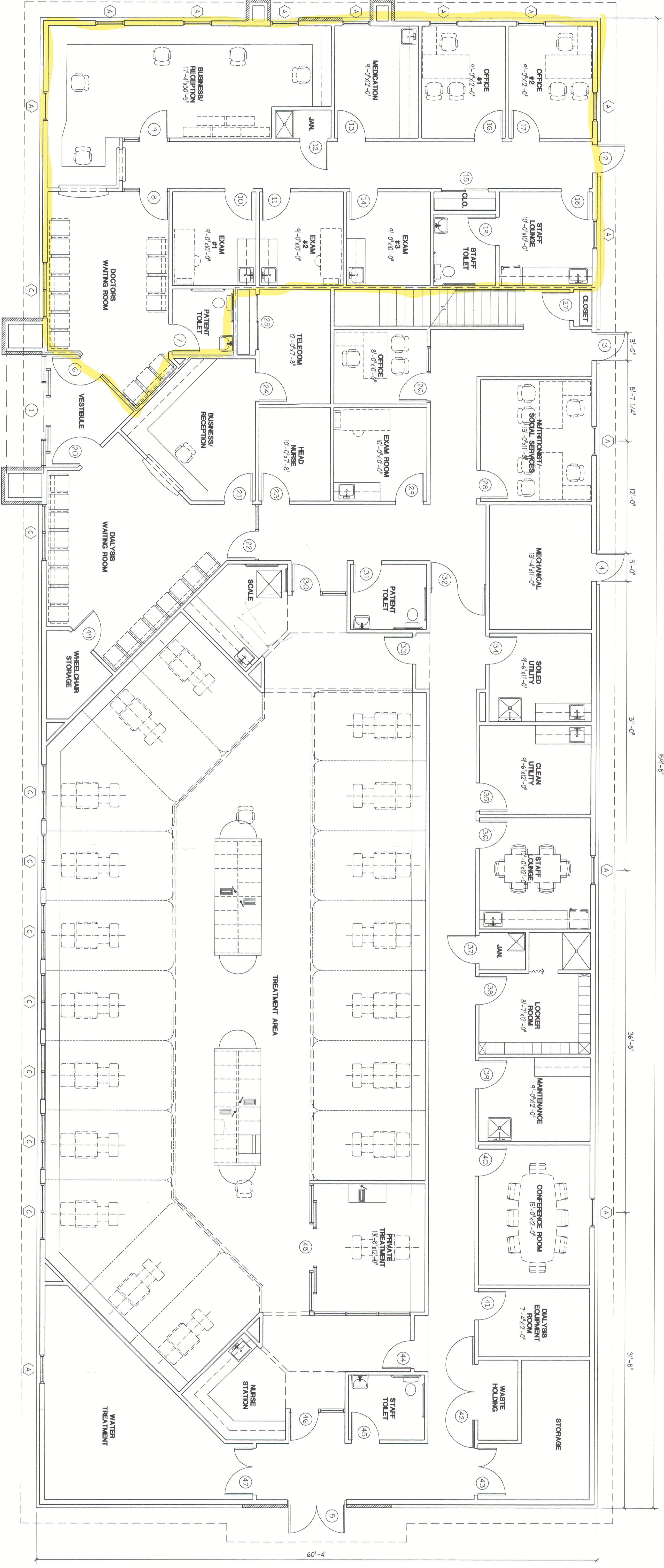


Revisions	
No.	Description



ALL REPORTS, PLANS, SPECIFICATIONS AND COMPUTER DRAWINGS OF THIS PROJECT ARE THE PROPERTY OF MANDERS / MERIGHI ASSOCIATES. ASSOCIATES RETAINS ALL COMMON LAW, STATUTE AND OTHER RESERVED RIGHTS INCLUDING THE COPYRIGHT AND PATENT RIGHTS IN THIS PROJECT. PERMISSION OF MANDERS/MERIGHI ASSOCIATES IS REQUIRED FOR ANY SUBSTANTIAL USE WITHOUT WRITTEN PERMISSION OF MANDERS/MERIGHI ASSOCIATES. THIS IS THE COPYRIGHTED LEGAL PROSCRIPTION.

© 2006 MANDERS / MERIGHI ASSOCIATES

MMA

MANDERS / MERIGHI ASSOCIATES
 ARCHITECTS & PLANNERS
 138 East Center Avenue/Windward, New Jersey 08360
 609-426-1100
 2000 Millville Avenue, Millville, NJ 08332
 David C. Manders, AIA
 Lawrence J. Merighi, IAN
 A1-0723
 A1-0742

Project
 NEW OFFICE BUILDING
 FOR
**The Kidney Center
 Of Millville**
 Elizabeth Avenue and High Street
 Millville New Jersey 08332

Drawing
 FLOOR PLAN
 DOOR SCHEDULE
 WALL SCHEDULE

Scale
 AS NOTED

Job
 27058

Sheet
A-1
 1 of 2

Date
 11/26/07

Drawn