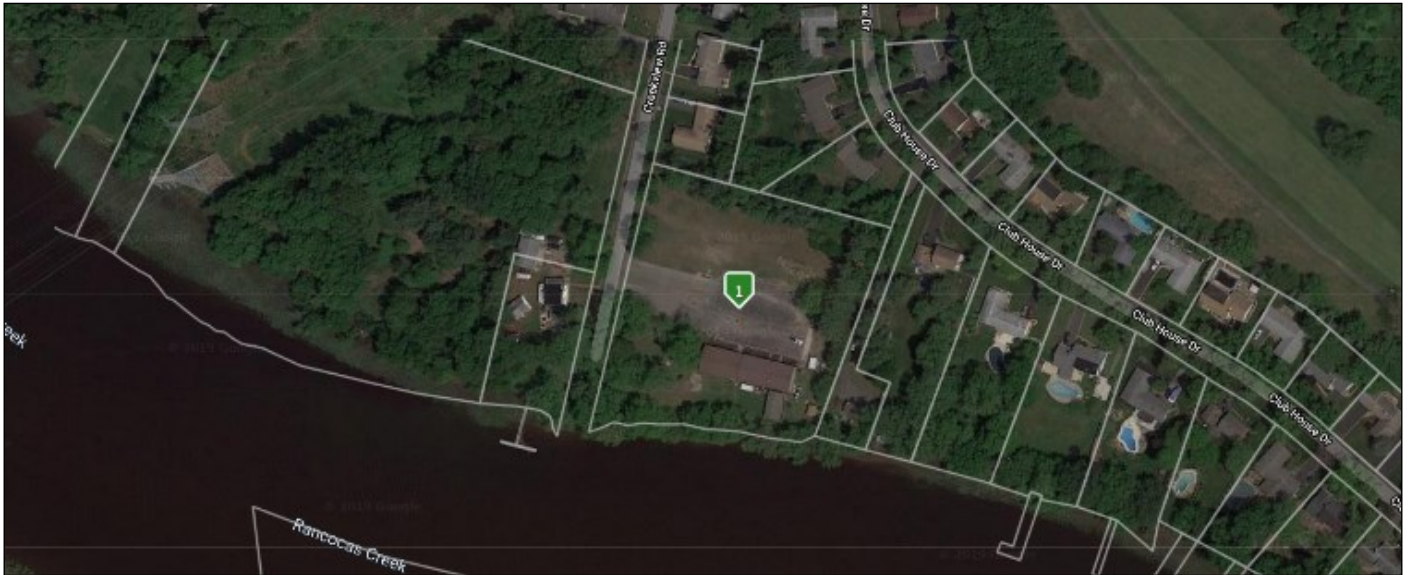




Development Site

For Sale

26 Creekview Rd, Willingboro, NJ



Sale Price: \$895,000

Lot Size: 3.5 Acres

Building Size: 7,200 SF

Zoning: Residential (R-3)

Real Estate Taxes (2021): \$29,327

Key Facts:

- R-3 Zoning allows for Multiple Uses including the possibility of Multi-Family/Senior Housing
- 325' Waterview frontage on Rancocas Creek
- Existing 7,200 SF Building previously used for hosting events.
- Large Asphalt Parking Lot
- Outdoor 836 SF detached screened in porch
- Public Water & Public Sewer
- 3/4 Acre grassy area
- Location offers access to Rt 130, NJ TNPK, Rts 295 & 195 for commuting throughout the Northeast and Southern New Jersey

Attention Developers – we are offering a unique opportunity to develop a 3.5 Acre parcel offering 325 feet of water view frontage on the Rancocas Creek. This parcel is located in the R-3 zoning district which allows for multiple uses including the possibility of Multi-Family/Senior housing structures. An existing 7,200 SF facility which was previously used for hosting events, is complete with a full service kitchen, commercial grade cooking appliances and could serve as a community Club house for social events/meetings. A detached outdoor screened in porch along with grassy picnic groves and plenty of asphalt parking provides for outdoor entertainment/socialization as well.

Situated just off Beverly Rancocas Rd this complex is located in a quiet residential neighborhood just around the corner from the Rancocas Golf Country Club. Strategically positioned halfway between Rt 130 & 295 this property offers access to the Delaware Valley Region or the Northeast Corridor via the NJ Turnpike or Interstate 95.

Eagle Commercial Real Estate

26 S. Maple Avenue
Suite 103
Marlton, NJ, 08053

Anthony Pustizzi, Broker

Office: 856-985-8565

Cell: 609-230-0896

Fax: 856-985-8563

tpustizzi@eaglecommercialre.com

www.eaglecommercialre.com