



# Commercial Land For Sale

115 Holly Hills Dr, Somers Point, NJ

Sale Price: \$129,500

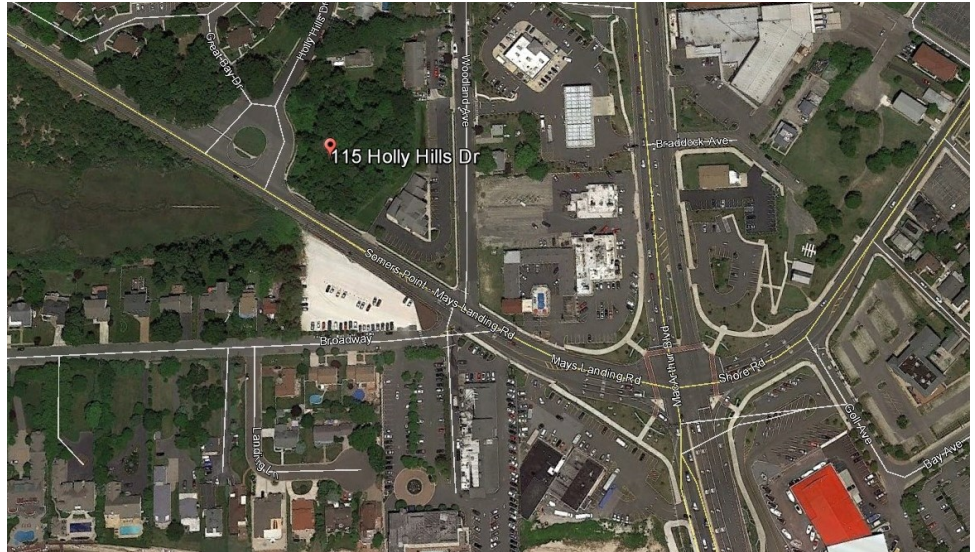
Lot Size: 1.39 Acres of Land

Zoning: Highway Commercial (HC-2)

Taxes (2016): \$2,515

#### Key Facts:

- 103ft of Road Frontage on Mays Landing Rd
- Offers Excellent Visibility and Exposure
- Access to major highways Rt9 & GS Pkwy



Vacant Commercial 1.39 Acre Lot strategically located in the HC-2 Highway Commercial zone in the former Somers Point circle area. The owner had previously developed an engineering plan designed to accommodate a 6,000 SF commercial building on site, however this property is being offered “As Is” without any representations or approvals. This ideal location allows access to the following: 1/10 mile to MacArthur Blvd/Rt. 52 Causeway Bridge leading to Ocean City; ½ mile to Rt. 9; one mile to the Garden State Parkway. Priced for immediate sale to the developer looking to locate a commercial structure in a very desirous location.

## Eagle Commercial Real Estate

26 S. Maple Avenue  
Suite 103  
Marlton, NJ, 08053

Anthony Pustizzi, Broker  
Phone: 856-985-8565  
Fax: 856-985-8563

[tpustizzi@eaglecommercialre.com](mailto:tpustizzi@eaglecommercialre.com)

