

Tomlin Professional Building

At 7 Myers Drive

Office Space

For Lease

*One 4,000 SF Suite Remaining*



Located at the 7 Myers Dr & Tomlin Station Rd Mullica Hill, NJ

### Property Information

Lot Size: 3 Acres

Build to Suit: Medical/Professional Office

Building Size: 16,000 SF

Available Unit: 4,000 SF

Parking designed for 80 spaces per lot

Electric, Gas, Public Water & Septic available

**Lease Rate: \$18 SF plus CAM, NNN**



26 S Maple Ave, Suite 103  
Marlton, NJ 08053  
856-985-8565 Office  
856-985-8563 Fax  
[www.eaglecommercialre.com](http://www.eaglecommercialre.com)

**Anthony Pustizzi, Broker**

609-230-0896 Cell

[tpustizzi@eaglecommercialre.com](mailto:tpustizzi@eaglecommercialre.com)

### Property Location Information

In one of Gloucester Counties fastest growing communities

At intersection of Rt 322 & Tomlin Station Rd

Just 1/2 Mile to Exit 2 of NJ Turnpike

Close Proximity to major highways, Rt 295 & Rt 55

High Visibility and Traffic Counts

Join Neighboring Businesses: Inspira, Advocare, Collision Care, Advanced Cardiology & SpaceWorks

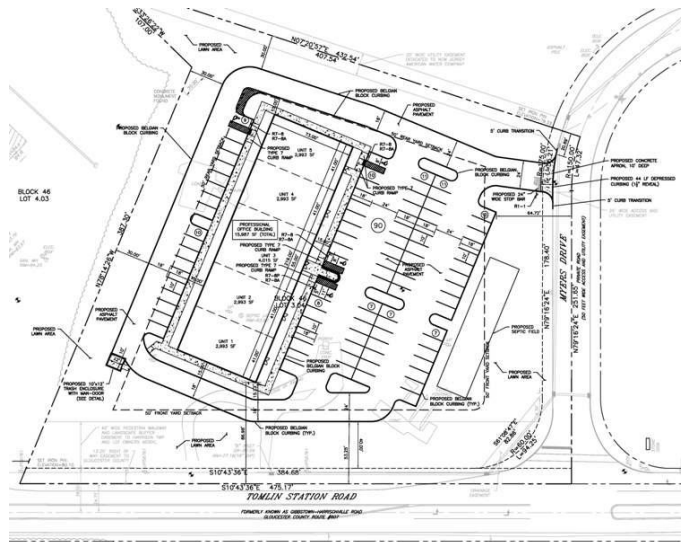
All information has been obtained from sources we believe to be reliable; however we make no guarantees about its accuracy. We include all projections, assumptions and estimates for example only and they may not represent future performance. Property availability is subject to changes in price, terms, prior sale or lease without notice. Prospective buyers should consult their tax and legal advisors to conduct their own investigation of the property and transactions. Only a fully executed contract detailing all agreed upon terms shall be binding upon parties to transactions.



# Build to Suit

## Medical/Professional Office Design

Block 46 Lot 3.04



Eagle Commercial Real Estate