

Tomlin Professional Building  
At 7 Myers Drive

Office Space  
For Sale/Lease

Build to Suit

Available 2018



Located at the 7 Myers Dr & Tomlin Station Rd Mullica Hill, NJ

### Property Information

Lot Size: 3 Acres  
Build to Suit: Medical/Professional Office  
Building Size: 16,000 SF  
Minimum Divisible: 3,000 SF  
Parking designed for 80 spaces per lot  
Electric, Gas, Public Water & Septic available

**Sale Price: \$205 per SF \***

**Lease Rate: \$18 SF plus CAM, NNN**

\*(Condo Option - Includes Fit Out Credit per SF)

## Mullica Hill Commerce Center At Tomlin Station

**3 + Acre  
Commercial Sites  
Flex/Office/Retail**



26 S Maple Ave, Suite 103  
Marlton, NJ 08053  
856-985-8565 Office  
856-985-8563 Fax  
www.eaglecommercialre.com

**Anthony Pustizzi, Broker**

609-230-0896 Cell

tpustizzi@eaglecommercialre.com

### Property Location Information

In one of Gloucester Counties fastest growing communities  
At intersection of Rt 322 & Tomlin Station Rd  
Just 1/2 Mile to Exit 2 of NJ Turnpike  
Close Proximity to major highways, Rt 295 & Rt 55  
High Visibility and Traffic Counts  
Join Neighboring Businesses: Inspira, Advocare, Collision Care, Advanced Cardiology & SpaceWorks

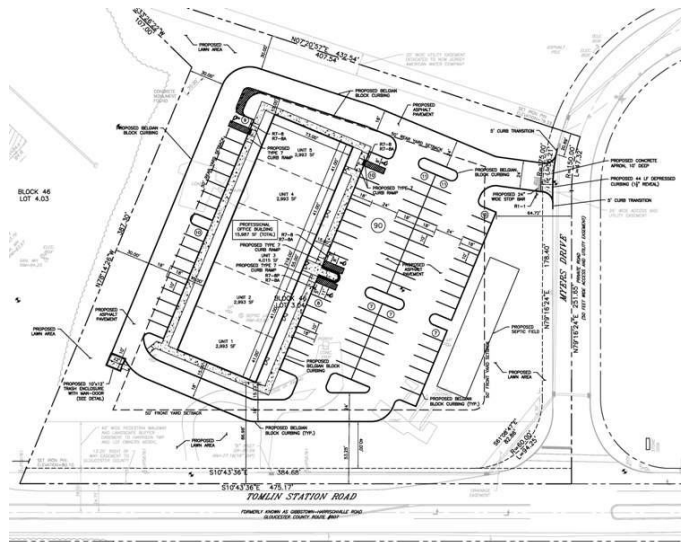
All information has been obtained from sources we believe to be reliable; however we make no guarantees about its accuracy. We include all projections, assumptions and estimates for example only and they may not represent future performance. Property availability is subject to changes in price, terms, prior sale or lease without notice. Prospective buyers should consult their tax and legal advisors to conduct their own investigation of the property and transactions. Only a fully executed contract detailing all agreed upon terms shall be binding upon parties to transactions.



# Build to Suit

Medical/Professional Office Design

Block 46 Lot 3.04



Eagle Commercial Real Estate