



# Resource Extraction Sites

Taylor Ave, Maurice River Twp., NJ

Sale Price: \$725,000

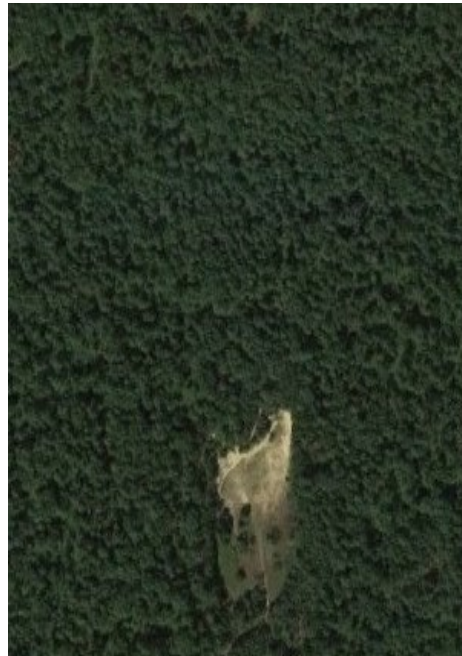
Lot Size: 52+- Acres

Zoning: Commercial

Taxes (2016): \$32,737

### Key Facts:

- Two Gravel Pit Sites consisting of Four Lots
- Parcel A - 23 Acres
- Parcel B - 29 Acres
- Operating under a Maurice River Twp. Land Extraction Permit
- Ideal location within Cumberland County
- Easy Access to Rts 40, 47, 49 & 55, AC Expressway & Garden State Parkway



L 3 Taylor Ave  
Block 112 Lots 3 & 4  
23 Acres

L 4 Taylor Ave  
Block 113 Lots 3 & 4  
29 Acres

## Eagle Commercial Real Estate

26 S. Maple Avenue  
Suite 103  
Marlton, NJ, 08053

Anthony Pustizzi, Broker  
Phone: 856-985-8565  
Fax: 856-985-8563  
tpustizzi@eaglecommercialre.com

Get a great return on your investment. This a unique opportunity to own and operate a 52 +- Acre gravel pit operation located in the heart of Cumberland County in Southern NJ. This offering is comprised of two sites consisting of four lots currently operating under a Maurice Township Land Extraction Permit. An ideal opportunity for construction, gravel or paving companies to expand their operations to this prime location. Situated in the middle of the Atlantic, Cape May & Cumberland County markets it is just minutes from Routes 40, 47 & 49 with easy access to Rt. 55, AC Expressway and Garden State Parkway.